

Synchro² Support Guidewires

Product number	Description	Total length	Distal segment	Proximal/Distal OD
S2SPS14215	Access Length, Support	215cm	35cm	.014in (0.36mm)
S2SPP14215	Access Length, Support, Pre-shaped	215cm	35cm	.014in (0.36mm)
S2SPS14300	Exchange Length, Support	300cm	35cm	.014in (0.36mm)
S2SPP14300	Exchange Length, Support, Pre-shape	300cm	35cm	.014in (0.36mm)

Synchro² Soft, Standard and Support Guidewires

See package insert for complete indications, contraindications, warnings and instructions for use.

Indications for use

The Synchro² Guidewire series is intended for general intravascular use, including neurovascular and peripheral vasculatures. It can be used to selectively introduce and position catheters and other interventional devices within the peripheral and neurovasculature. This device should be used only by physicians trained in percutaneous, intravascular techniques and procedures.

This document is intended solely for the use of healthcare professionals.

A physician must always rely on his or her own professional clinical judgment when deciding whether to use a particular product when treating a particular patient. Stryker does not dispense medical advice and recommends that physicians be trained in the use of any particular product before using it in a procedure. The information presented is intended to demonstrate the breadth of Stryker product offerings. A physician must always refer to the package insert, product label and/or instructions for use before using any Stryker product. Products may not be available in all markets because product availability is subject to the regulatory and/or medical practices in individual markets. Please contact your Stryker representative if you have questions about the availability of Stryker products in your area.

Stryker Corporation or its divisions or other corporate affiliated entities own, use, or have applied for the following trademarks or service marks: GentleTip, Stryker, Synchro². All other trademarks are trademarks of their respective owners or holders.

The absence of a product, feature, or service name, or logo from this list does not constitute a waiver of Stryker's trademark or other intellectual property rights concerning that name or logo.

AUS Australian Sponsor Address
Stryker Australia Pty Ltd
8 Herbert Street
St Leonards, NSW 2065
Australia

Stryker Neurovascular
47900 Bayside Parkway
Fremont, CA 94538
strykerneurovascular.com
Date of Release: APR/2020
EX_EN_IL

Synchro²™ Support Guidewire

Start with more.

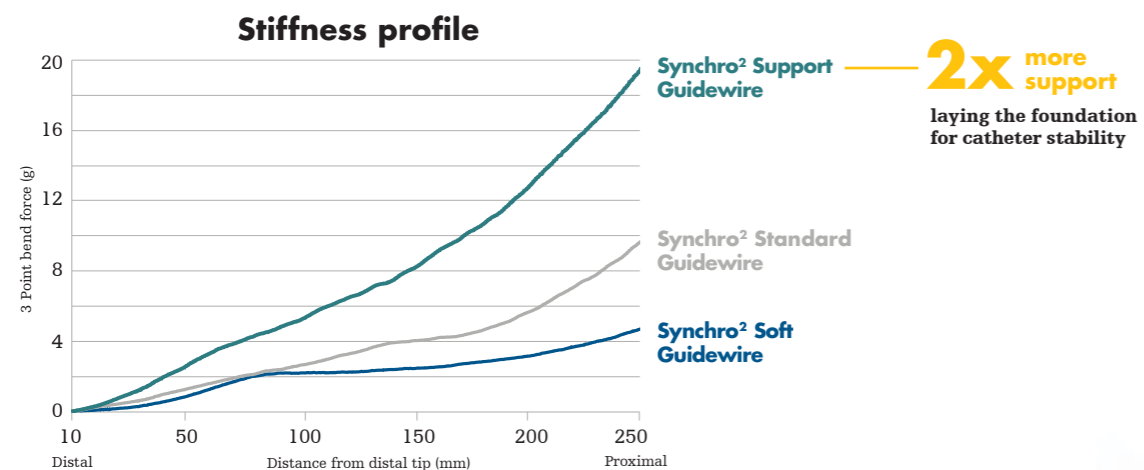


Start with **more.**

Built on the trusted 0.014in Synchro² Guidewire platform, Synchro² Support provides more support with uncompromised distal access designed to improve navigation of large-bore catheters to the clot.

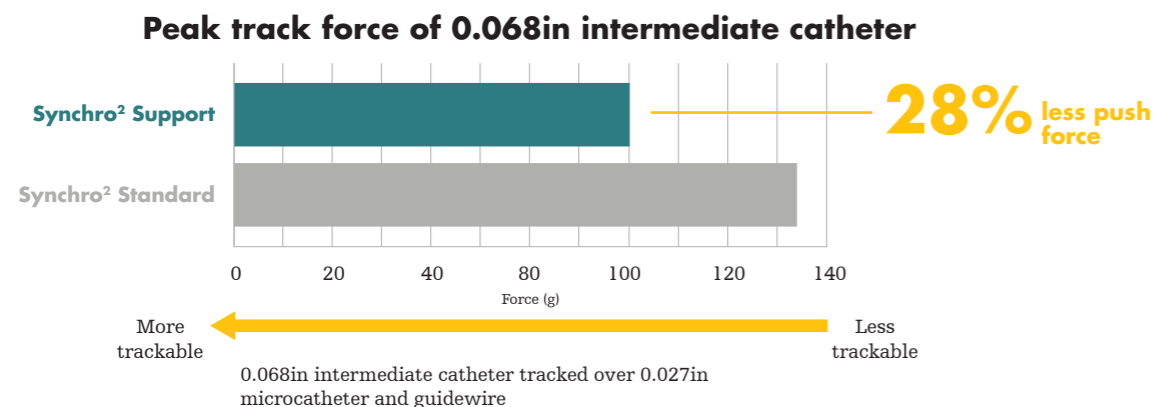
More **distal support**

Achieved with a more robust core wire



More **trackability** of large bore catheters

Makes it easier to navigate through tortuosity



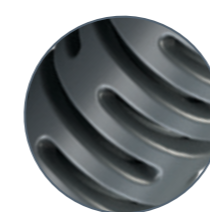
More **length** to accommodate a triaxial set up

With longer 215cm length



Trusted Synchro² Guidewire construction

Enhanced features for proven performance



Pushability and torque control from the microfabricated nitinol distal hypotube

Dependable distal access
Consistent 0.014in tip-to-end diameter

0.014in diameter

Gentle vessel contact with Synchro² GentleTip Technology offered in straight and pre-shaped tips

Testing performed by Stryker. Data on file at Stryker. Bench test results may not necessarily be indicative of clinical performance.

Synchro²™ Support
Guidewire